

FORTA PRO

W E B U I L D M O D U L A R



МОДУЛЬНОЕ ОТДЕЛЕНИЕ ИНФЕКТОЛОГИИ

Апрель 2020



- ❏ Forta PRO предлагает модульные решения для:
 - ❏ Больниц и клиник
 - ❏ Гостиниц
 - ❏ Квартир
 - ❏ Общежитий
- ❏ Авторизованный поставщик для больничных учреждений Дании
- ❏ Опыт в проектировании и производстве медицинских объектов
- ❏ Реализованные проекты в Скандинавии, США, Исландии и Великобритании
- ❏ Производственные мощности более 120 000 м² в год
- ❏ Доставка по всему миру



МОДУЛЬНОЕ ОТДЕЛЕНИЕ ИНФЕКТОЛОГИИ

ПРОИЗВОДИТЕЛЬ Forta Prefab SIA, company No 40103727283

СЕРТИФИКАТЫ

Управление качеством, Системы управления процессами окружающей среды, Системы управления охраной труда и производственной безопасностью компании Forta Prefab Ltd.: ISO 14000, ISO 50001, ISO 45001, ISO 9001; Сертификация RISE и SINTEF модульных ванных комнат. Больше информации по ссылке <http://www.fortapro.com/certificates/>

РАЗГРАНИЧЕНИЕ ОТВЕТСТВЕННОСТИ

- Проектные чертежи, представленный в данном документе могут быть изменены и дополнены.
- Изменения на этапе детализации проекта, могут повлиять на стоимость производства.
- Все размеры указаны в миллиметрах и должны учитываться в числовых значениях, а не в масштабе.
- Проектные решения, представленные в данном документе, являются авторским правом и собственностью компании Forta PRO, на их основе не могут производиться другие здания, не могут передаваться третьим лицам, копироваться или использоваться для каких-либо иных целей.
- Все размеры застройки должны быть проверены на месте до начала работ и доведены до сведения Forta PRO.
- Руководитель строительства / подрядчик должен проверить все размеры и детали проекта, и нести ответственность за реализацию проекта.
- Проектные чертежи следует читать вместе с соответствующими архитектурными, структурными чертежами, инженерными коммуникациями, и их спецификациями.
- Любые расхождения должны быть доведены до сведения консультантов в течение 7 рабочих дней с момента получения этого чертежа, до начала соответствующего этапа работ
- Детализация чертежей предназначена исключительно для данного уровня эскизного проекта и предполагает детальную проработку с руководителем проекта / подрядчиком / субподрядчиками, в том числе для интеграции и соответствии целям основного проекта.
- В случае комментариев по представленным чертежам, менеджер проекта должен направить их в течение 7 рабочих дней с момента получения данного документа. В противном случае считается, что проектные чертежи и дизайн приняты клиентом, с соответствующей ответственностью за выполненные работы.
- Дополнительные принадлежности и медицинское оборудования не включены в цену.



ОТДЕЛЬНО-СТОЯЩИЙ МОДУЛЬНЫЙ БЫСТРО ВОЗВОДИМЫЙ БЛОК ОТДЕЛЕНИЯ ИНФЕКТОЛОГИИ НА 20 КОЕК С ВСПОМОГАТЕЛЬНЫМИ ПОМЕЩЕНИЯМИ

Представленный блок отделения инфектологии на 20 коек должен быть размещен на строительной площадке или сборном фундаменте (не входит в модульную программу) и подключен к больничным энергетическим и другим техническим системам (вентиляция, отопление, медицинские газы, электричество, информационные системы и т. д.).

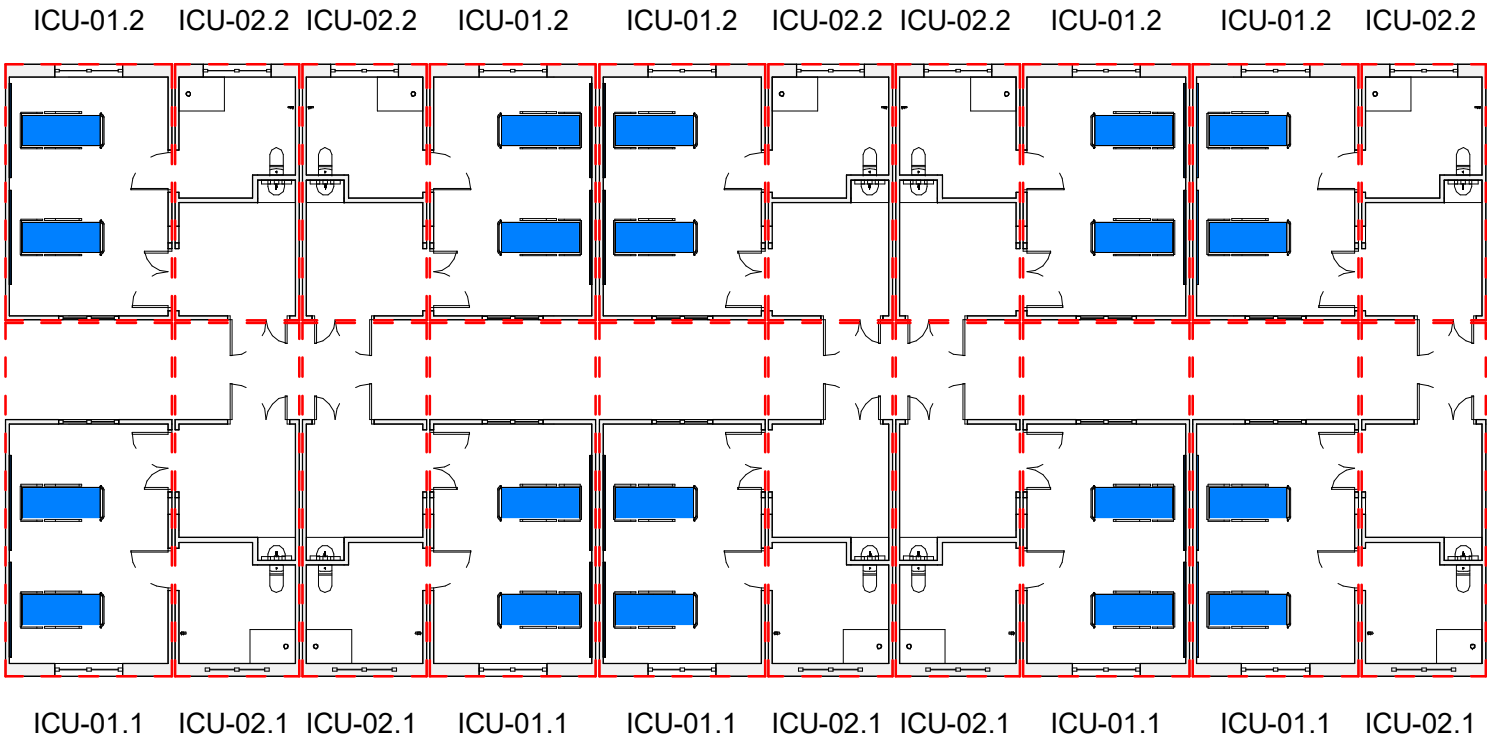
Все электрические, сантехнические, отопительные, вентиляционные системы, системы кондиционирования, распределительные системы медицинских газов вплоть до клеммных блоков устанавливаются в модуле на заводе. Стационарное медицинское оборудование может быть включено и установлено на заводе (не входит в данную модульную программу и цену). Модуль готов к работе по принципу «plug-and-play».

- Предлагаемое решение является предварительным!
- Конкретные детали проекта будут учтены на этапе проектирования!
- Все размеры адаптируются для модульного дизайна, строительства и транспортировки!
- Все потенциальные риски и процедуры по их устранению должны быть оценены на этапе проектирования!
- Во время проекта все местные стандарты и их применение должны быть учтены дополнительно!
- Количество типов модулей и размеры могут быть изменены!
- Архитектурные, инженерные спецификации будут разработаны на этапе проектирования
- Шахты и точки соединения инженерных систем будут уточнены на этапе проектирования
- Структурные решения будут разработаны на этапе проектирования
- Структурные элементы фасада и отделка не включены
- Области, не помеченные, как МОДУЛЬНЫЕ, не включены в расчеты, если не указано иное
- Обмен документами производится на английском языке.
- Подробная информация о требованиях или любые другие конкретные требования должны быть предоставлены Forta PRO на начальной стадии проектирования. В частности, размеры помещения, установка специального оборудования, уровень пола, освещение, размеры дверных проемов
- Общая модульная площадь определяется без учета фасадных слоев (предполагаемая толщина 110 мм)

FIRE: EI 60

Gross Modular Area (GMA) infectious diseases		
Name	Number	Area
infection 01.1	01.1-001	40.87 m²
infection 01.1	01.1-002	40.87 m²
infection 01.1	01.1-003	40.87 m²
infection 01.1	01.1-004	40.87 m²
infection 01.1	01.1-005	40.87 m²
infection 01.2	01.2-001	29.67 m²
infection 01.2	01.2-002	29.67 m²
infection 01.2	01.2-003	29.67 m²
infection 01.2	01.2-004	29.67 m²
infection 01.2	01.2-005	29.67 m²
infection 02.1	02.1-001	30.53 m²
infection 02.1	02.1-002	30.53 m²
infection 02.1	02.1-003	30.53 m²
infection 02.1	02.1-004	30.53 m²
infection 02.1	02.1-005	30.53 m²
infection 02.2	02.2-001	22.17 m²
infection 02.2	02.2-002	22.17 m²
infection 02.2	02.2-003	22.17 m²
infection 02.2	02.2-004	22.17 m²
20		616.21 m²

not included



PROJECT NAME: Infection unit		PROJECT N°: 20EU-M005
SHEET NAME: Unit plan		REVISION: X
DRAWING ID: A100 / X		SCALE: 1 : 200 @A3
PROJ. MAN.	Ethan Chetrit	STAGE:
APPROVED BY	Kristaps Miķelsons	Estimation
ARCHITECT	Mārcis Rancāns	
DRAWN BY	Mārcis Rancāns	
REVIEW DATE	02/04/2020 17:02:11	
PROJECT ISSUED	Issue Date	

FORTA PRO

WE BUILD MODULAR

SIA Forta Pro, Rīga, Emīļa Melngaiļa iela 1A, LV-1010

The Copyright in this drawing is vested in "Forta Pro" and no license or assignment of any kind has been, or is granted to any third party whether by provision of copies or originals, or otherwise agreed in writing. Electronic Data / drawings are issued as "read only" and should not be interrogated for measurement.

1) All dimensions are in millimeters. 2) This drawing is a copyright and property of Forta PRO and is not to be produced, copied, handed over to third party or used for any other purpose other than for which it is intended. 3) All dimensions shall be verified on site prior to start of work. Any discrepancy shall be brought to the notice of Forta PRO. 4) The construction manager/ contractor must check all dimensions and details and be responsible for the same. 5) Dimensions are to be read and not to be scaled. 6) This drawing is to be read in conjunction with all relevant architectural, structural, MEP drawings, specialist drawings along with their specifications. 7) Any discrepancy shall be brought to the notice of the consultants within 7 working days of receipt of this drawing, but always prior to procurement/ execution of works. 8) Drawing approval is for the conformity with outline design intent only and does not relieve the project managers/ contractors/ sub contractors from full responsibility for the accuracy, integration and fitness for purpose of design. 9) Project managers to revert back within 7 working days of receipt, of this drawing on co-ordination and buildability issues. If otherwise, it would be deemed that they have understood and accepted the drawings/ design and own full responsibility for the works carried out accordingly.

X	2020.04.02	first draft	M. Rancāns
Revision	Date	Description	Issued by

Electrical and Medical gas supply panel per bed:

O ₂	1x - ventilation; 10L/min/bed
Air	1x - ventilation
Suction	1x - suction
GPO	8x - bed, multi parameter monitor, infusion pump, syringe pump, computer
GND	2x - equipotential earth connector plugs
RCD	1x - residual current device for sockets
Data	2x - computer

Wall supplies per bed:

GPO	5x - bed, cleaner, mobile equipment
RCD	1x - residual current device for sockets
Data	3x - CCTV, computer, TV (optional)
Nurse call:	1x - Staff/staff call, cardiac arrest call + audio-visual signal elements

Room Material and outline specifications:

Floor	Vinyl/ Linoleum flooring, slip resistant, 150mm coving, heavy duty
Walls	Paint, chemically resistant to hard cleaning
Guards:wall, corner	Vinyl/PVC, mm AFFL
Ceiling	Ceiling tiles, accoustically absorbent, sealed
Door: single	effective clear opening width min. 950 mm
Door: double	effective clear opening width min. 1400 mm (950 + 450)
Guards:door frame	Vinyl/PVC, up to 900mm AFFL
Guards:door kick plate	Steinless steel, up to 400 AFFL
Window: exterior	1800Wx1600H mm wall opening, transparent from inside, translucent from outside
Handrail: corridor	32-50mm Ø circular type, 50-75mm from wall, return to wall end caps,
Window:observation	1600Wx1600H, transparent, with blinds
Hatch	400Wx400H, pass through hatch
Worktop	laminate

Other Fixtures, Equipment and associated Services:

Surface cleaning:

All surface materials be compatible with hard cleaning with disinfectants containing:

- Hydrogen Peroxide
- Sodium Hypochlorite
- Isopropanol
- Formaldehyde
- Glutaraldehyde
- Peracetic acid

Notes:

Bariatric	Services not provisioned for bariatric patients
Columns	Column dimensions w/out fire paint thickness
Air supply:corridor	Mechanical ventilation and cooling, arrestance 85% (F7 according to EN 1822:2009), min. 6 AC/hr
Air supply:patient	Mechanical ventilation and cooling, arrestance 99.95% (F7 according to EN 1822:2009), min. 15 AC/hr
Emergency power	No special emergency power outlets are provisioned
Temperature	Locally controllable
Humidity	Locally controllable
Heating	Low Pressure Hot Water radiators, thermostatically controllable
Lighting	20lux night general service illumination, 500lux daytime general service illumination, 1000lux local task illuminance at bed level (by examination lamp)

infection-01.1

FIRE: EI 60

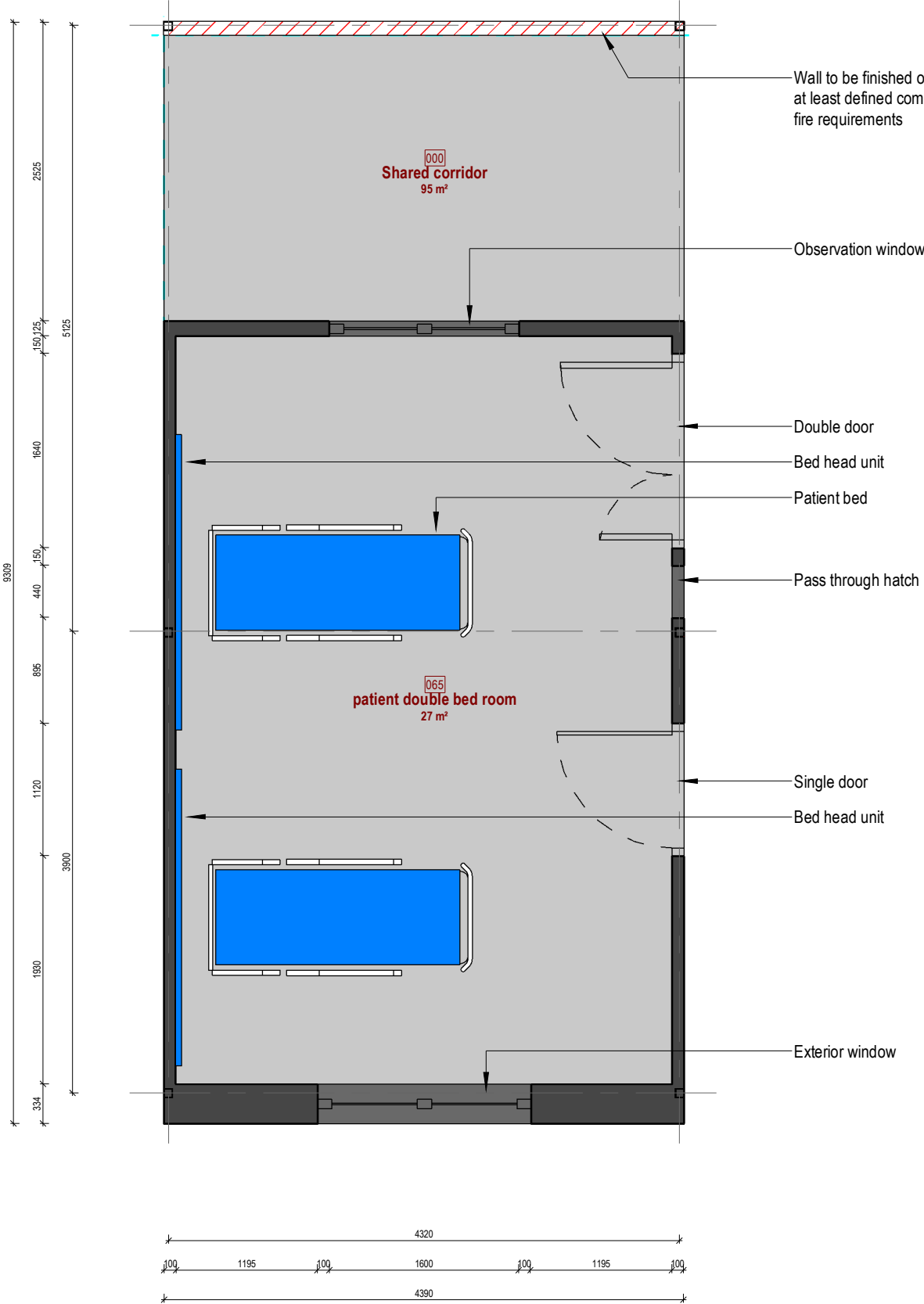
not included

Gross Modular Area (GMA) infectious diseases

Name	Number	Area
infection 01.1	01.1-001	40.87 m²
infection 01.1	01.1-002	40.87 m²
infection 01.1	01.1-003	40.87 m²
infection 01.1	01.1-004	40.87 m²
infection 01.1	01.1-005	40.87 m²
infection 01.2	01.2-001	29.67 m²
infection 01.2	01.2-002	29.67 m²
infection 01.2	01.2-003	29.67 m²
infection 01.2	01.2-004	29.67 m²
infection 01.2	01.2-005	29.67 m²
infection 02.1	02.1-001	30.53 m²
infection 02.1	02.1-002	30.53 m²
infection 02.1	02.1-003	30.53 m²
infection 02.1	02.1-004	30.53 m²
infection 02.1	02.1-005	30.53 m²
infection 02.2	02.2-001	22.17 m²
infection 02.2	02.2-002	22.17 m²
infection 02.2	02.2-003	22.17 m²
infection 02.2	02.2-004	22.17 m²
20		616.21 m²

Net Internal Area (NIA) in infection-01.1

Number	Name	Department	Area	Perimeter
065	patient double bed room	infection-01.1	26.50 m²	21.03 m
			26.50 m²	



WIDTH* :4400 mm
HEIGHT* :4104 mm
LENGTH* :9324 mm
WEIGHT** :14.36 t

*Structural elements are not taken into account
**Indicative and for information only.

PROJECT NAME:	Infection unit	PROJECT N°:	20EU-M005
SHEET NAME:	infection-01.1 / floor plan - architecture	REVISION:	X
DRAWING ID:	A101 / X	SCALE:	As indicated @A3
PROJ. MAN.	Ethan Chetrit	STAGE:	Estimation
APPROVED BY	Kristaps Miķelsons		
ARCHITECT	Mārcis Rancāns		
DRAWN BY	Mārcis Rancāns		
REVIEW DATE	02/04/2020 17:02:12		
PROJECT ISSUED	Issue Date		

FORTA PRO

WE BUILD MODULAR

SIA Forta Pro, Rīga, Emīļa Melngaiļa iela 1A, LV-1010

The Copyright in this drawing is vested in "Forta Pro" and no license or assignment of any kind has been, or is granted to any third party whether by provision of copies or originals, or otherwise agreed in writing. Electronic Data / drawings are issued as "read only" and should not be interrogated for measurement.

1) All dimensions are in millimeters. 2) This drawing is a copyright and property of Forta PRO and is not to be produced, copied, handed over to third party or used for any other purpose other than for which it is intended. 3) All dimensions shall be verified on site prior to start of work. Any discrepancy shall be brought to the notice of Forta PRO. 4) The construction manager/ contractor must check all dimensions and details and be responsible for the same. 5) Dimensions are to be read and not to be scaled. 6) This drawing is to be read in conjunction with all relevant architectural, structural, MEP drawings, specialist drawings along with their specifications. 7) Any discrepancy shall be brought to the notice of the consultants within 7 working days of receipt of this drawing, but always prior to procurement/ execution of works. 8) Drawing approval is for the conformity with outline design intent only and does not relieve the project managers/ contractors/ sub contractors from full responsibility for the accuracy, integration and fitness for purpose of design. 9) Project managers to revert back within 7 working days of receipt, of this drawing on co-ordination and buildability issues. If otherwise, it would be deemed that they have understood and accepted the drawings/ design and own full responsibility for the works carried out accordingly.

X	2020.04.02	first draft	M. Rancāns
Revision	Date	Description	Issued by

C:\Users\User\Desktop\mr_forta_pro\01. projekti\modules\20EU-M005 infection unit\infection unit.rvt

02/04/2020 17:02:12

Electrical and Medical gas supply panel per bed:

O ₂	1x - ventilation; 10L/min/bed
Air	1x - ventilation
Suction	1x - suction
GPO	8x - bed, multi parameter monitor, infusion pump, syringe pump, computer
GND	2x - equipotential earth connector plugs
RCD	1x - residual current device for sockets
Data	2x - computer

Wall supplies per bed:

GPO	5x - bed, cleaner, mobile equipment
RCD	1x - residual current device for sockets
Data	3x - CCTV, computer, TV (optional)
Nurse call:	1x - Staff/staff call, cardiac arrest call + audio-visual signal elements

Room Material and outline specifications:

Floor	Vinyl/ Linoleum flooring, slip resistant, 150mm coving, heavy duty
Walls	Paint, chemically resistant to hard cleaning
Guards:wall, corner	Vinyl/PVC, mm AFFL
Ceiling	Ceiling tiles, accoustically absorbent, sealed
Door: single	effective clear opening width min. 950 mm
Door: double	effective clear opening width min. 1400 mm (950 + 450)
Guards:door frame	Vinyl/PVC, up to 900mm AFFL
Guards:door kick plate	Steinless steel, up to 400 AFFL
Window: exterior	1800Wx1600H mm wall opening, transparent from inside, translucent from outside
Handrail: corridor	32-50mm Ø circular type, 50-75mm from wall, return to wall end caps,
Window:observation	1600Wx1600H, transparent, with blinds
Hatch	400Wx400H, pass through hatch
Worktop	laminate

Other Fixtures, Equipment and associated Services:

-

Surface cleaning:

All surface materials be compatible with hard cleaning with disinfectants containing:

- Hydrogen Peroxide
- Sodium Hypochlorite
- Isopropanol
- Formaldehyde
- Glutaraldehyde
- Peracetic acid

Notes:

Bariatric	Services not provisioned for bariatric patients
Columns	Column dimensions w/out fire paint thickness
Air supply:corridor	Mechanical ventilation and cooling, arrestance 85% (F7 according to EN 1822:2009), min. 6 AC/hr
Air supply:patient	Mechanical ventilation and cooling, arrestance 99.95% (F7 according to EN 1822:2009), min. 15 AC/hr
Emergency power	No special emergency power outlets are provisioned
Temperature	Locally controllable
Humidity	Locally controllable
Heating	Low Pressure Hot Water radiators, thermostatically controllable
Lighting	20lux night general service illumination, 500lux daytime general service illumination, 1000lux local task illuminance at bed level (by examination lamp)

infection-01.2

FIRE: EI 60

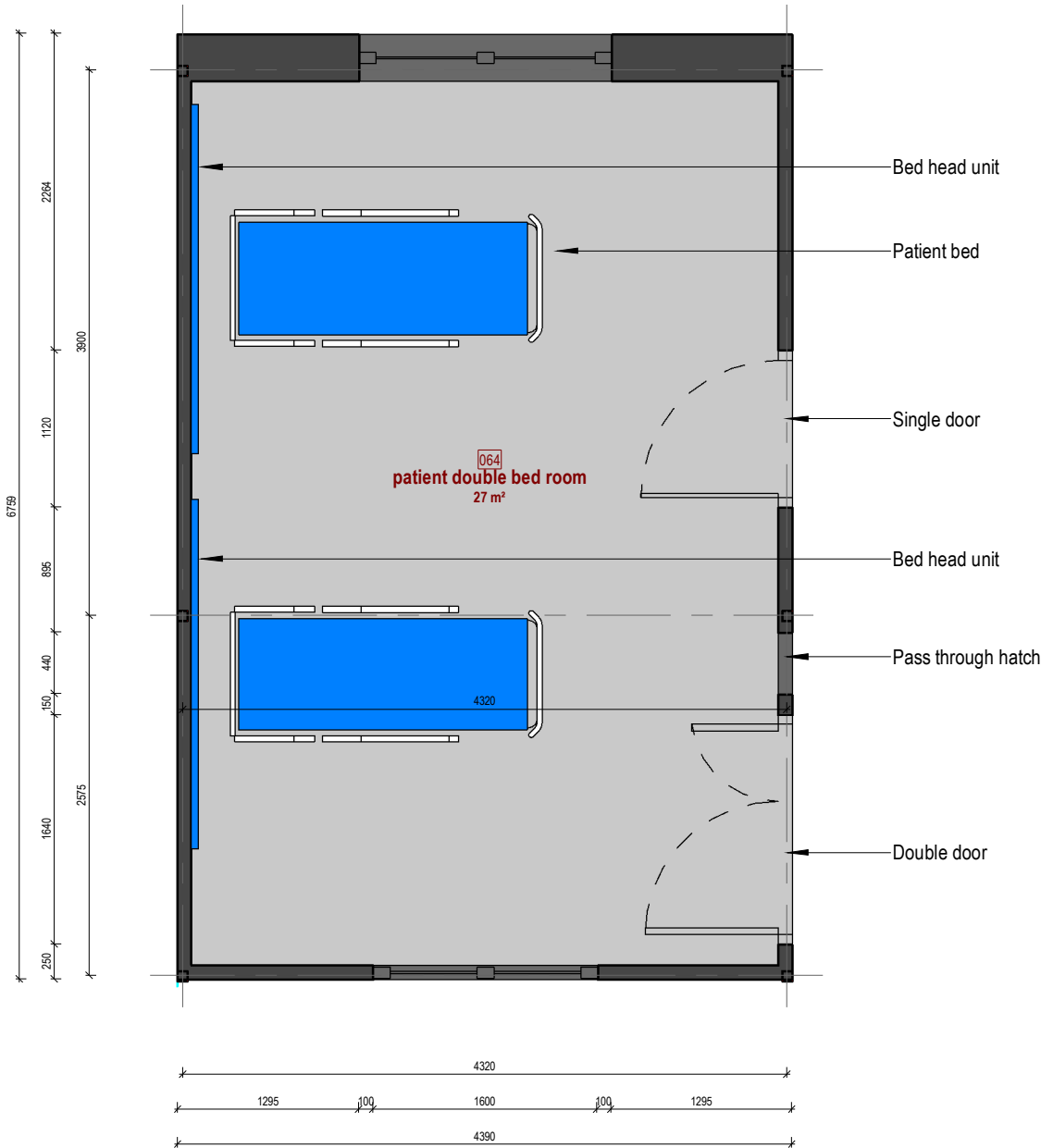
not included

Gross Modular Area (GMA) infectious diseases

Name	Number	Area
infection 01.1	01.1-001	40.87 m²
infection 01.1	01.1-002	40.87 m²
infection 01.1	01.1-003	40.87 m²
infection 01.1	01.1-004	40.87 m²
infection 01.1	01.1-005	40.87 m²
infection 01.2	01.2-001	29.67 m²
infection 01.2	01.2-002	29.67 m²
infection 01.2	01.2-003	29.67 m²
infection 01.2	01.2-004	29.67 m²
infection 01.2	01.2-005	29.67 m²
infection 02.1	02.1-001	30.53 m²
infection 02.1	02.1-002	30.53 m²
infection 02.1	02.1-003	30.53 m²
infection 02.1	02.1-004	30.53 m²
infection 02.1	02.1-005	30.53 m²
infection 02.2	02.2-001	22.17 m²
infection 02.2	02.2-005	22.17 m²
infection 02.2	02.2-002	22.17 m²
infection 02.2	02.2-003	22.17 m²
infection 02.2	02.2-004	22.17 m²
20		616.21 m²

Net Internal Area (NIA) in infection-01.2

Number	Name	Area	Perimeter
064	patient double bed room	26.50 m²	21.03 m
		26.50 m²	



WIDTH* :4400 mm
HEIGHT* :4390 mm
LENGTH* :6759 mm
WEIGHT** :10.41 t

*Structural elements are not taken into account
**Indicative and for information only.

PROJECT NAME:	PROJECT N°:
Infection unit	20EU-M005
SHEET NAME:	REVISION:
infection-01.2 / floor plan - architecture	X
DRAWING ID:	SCALE:
A102 / X	As indicated @A3
PROJ. MAN.	STAGE:
Ethan Chetrit	Estimation
APPROVED BY	
Kristaps Miķelsons	
ARCHITECT	
Mārcis Rancāns	
DRAWN BY	
Mārcis Rancāns	
REVIEW DATE	
02/04/2020 17:02:12	
PROJECT ISSUED	Issue Date

FORTA PRO

WE BUILD MODULAR

SIA Forta Pro, Rīga, Emīļa Melngaiļa iela 1A, LV-1010

The Copyright in this drawing is vested in "Forta Pro" and no license or assignment of any kind has been, or is granted to any third party whether by provision of copies or originals, or otherwise agreed in writing. Electronic Data / drawings are issued as "read only" and should not be interrogated for measurement.

1) All dimensions are in millimeters. 2) This drawing is a copyright and property of Forta PRO and is not to be produced, copied, handed over to third party or used for any other purpose other than for which it is intended. 3) All dimensions shall be verified on site prior to start of work. Any discrepancy shall be brought to the notice of Forta PRO. 4) The construction manager/ contractor must check all dimensions and details and be responsible for the same. 5) Dimensions are to be read and not to be scaled. 6) This drawing is to be read in conjunction with all relevant architectural, structural, MEP drawings, specialist drawings along with their specifications. 7) Any discrepancy shall be brought to the notice of the consultants within 7 working days of receipt of this drawing, but always prior to procurement/ execution of works. 8) Drawing approval is for the conformity with outline design intent only and does not relieve the project managers/ contractors/ sub contractors from full responsibility for the accuracy, integration and fitness for purpose of design. 9) Project managers to revert back within 7 working days of receipt, of this drawing on co-ordination and buildability issues. If otherwise, it would be deemed that they have understood and accepted the drawings/ design and own full responsibility for the works carried out accordingly.

X	2020.04.02	first draft	M. Rancāns
Revision	Date	Description	Issued by

C:\Users\User\Desktop\mr_forta_pro\01. projekti\modules\20EU-M005 infection unit\infection unit.rvt 02/04/2020 17:02:13

infection-02.1

FIRE: EI 60

Wall supplies:

- GPO3x - cleaners, CCTV
- RCD1x - residual current device for sockets
- Data1x - CCTV for Air Lock
- Nurse call:1x - Staff/staff call, cardiac arrest call + audio-visual signal elements

Surface cleaning:

- All surface materials be compatible with hard cleaning with disinfectants containing:
- Hydrogen Peroxide
 - Sodium Hypochlorite
 - Isopropanol
 - Formaldehyde
 - Glutaraldehyde
 - Peracetic acid

Room Material and outline specifications:

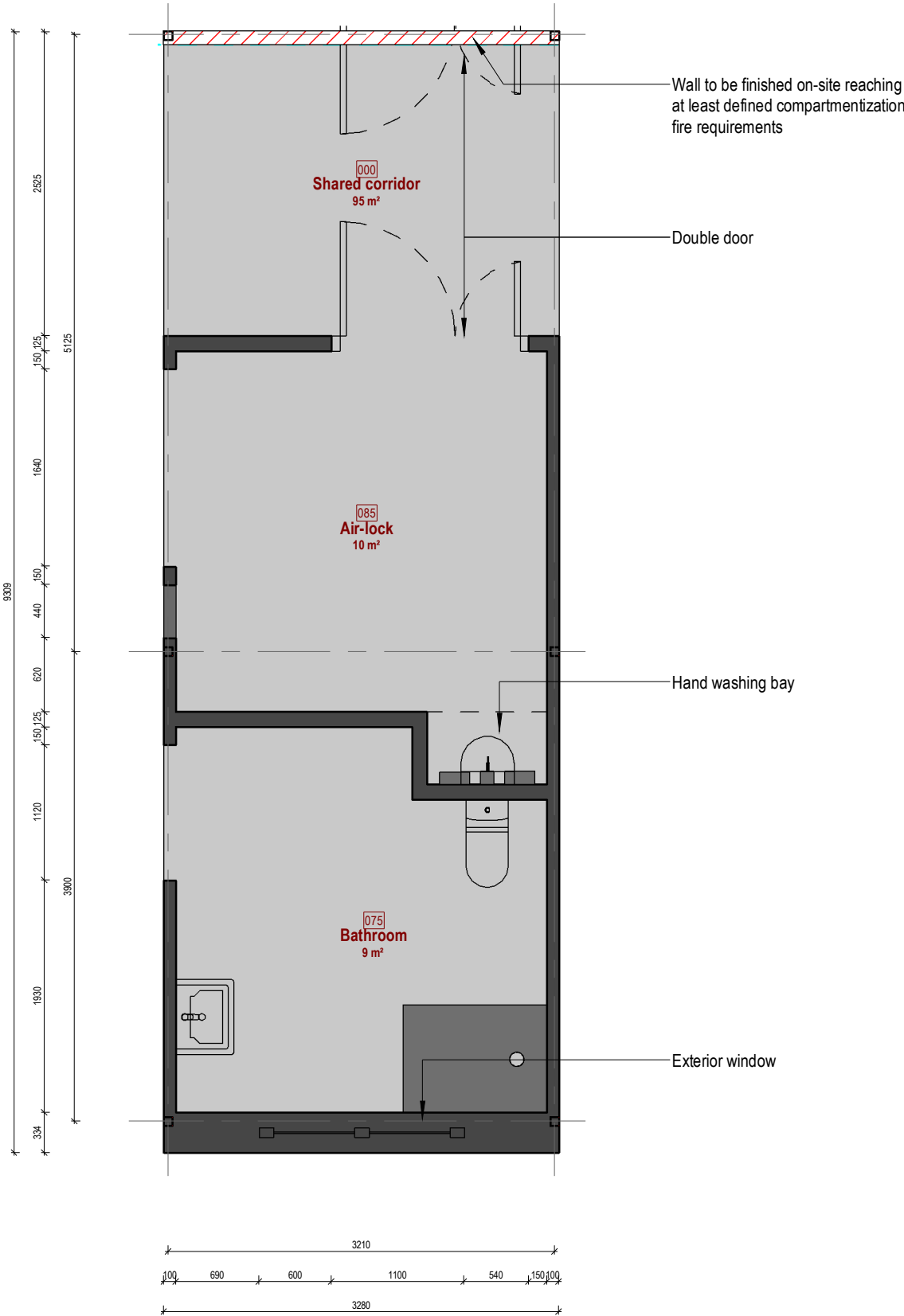
- FloorVinyl/ Linoleum flooring, slip resistant, 150mm coving, heavy duty
- WallsPaint, chemically resistant to hard cleaning
- Wall protection:Hand rails/ crash fails
- CeilingCeiling tiles, accoustically absorbent, sealed
- Door: singleeffective clear opening width min. 950 mm
- Door: doubleeffective clear opening width min. 1400 mm (950 + 450)
- Guards:door frameVinyl/PVC, up to 900mm AFFL
- Guards:door kick plateSteinless steel, up to 400 AFFL
- Window: exterior1800Wx1600H mm wall opening, transparent from inside, translucent from outside
- Handrail: corridor32-50mm Ø circular type, 50-75mm from wall, return to wall end caps, laminate
- Worktoplaminate

Other Fixtures, Equipment and associated Services:

-

Notes:

- BariatricServices not provisioned for bariatric patients
- ColumnsColumn dimensions w/out fire paint thickness
- Air supply:corridorMechanical ventilation and cooling, arrestance 85% (F7 according to EN 1822:2009), min. 6 AC/hr
- Air supply:air-lockMechanical ventilation and cooling, arrestance 99.95% (HEPA H13 according to EN 1822:2009), min. 15 AC/hr
- Air supply:bathroomMechanical ventilation and cooling, arrestance 99.95% (HEPA H13 according to EN 1822:2009), min. 6 AC/hr
- Emergency powerNo special emergency power outlets are provisioned
- TemperatureLocally controllable
- HumidityLocally controllable
- HeatingLow Pressure Hot Water radiators, thermostatically controllable
- Lighting500lux daytime general service illumination



not included

Gross Modular Area (GMA) infectious diseases

Name	Number	Area
infection 01.1	01.1-001	40.87 m²
infection 01.1	01.1-002	40.87 m²
infection 01.1	01.1-003	40.87 m²
infection 01.1	01.1-004	40.87 m²
infection 01.1	01.1-005	40.87 m²
infection 01.2	01.2-001	29.67 m²
infection 01.2	01.2-002	29.67 m²
infection 01.2	01.2-003	29.67 m²
infection 01.2	01.2-004	29.67 m²
infection 01.2	01.2-005	29.67 m²
infection 02.1	02.1-001	30.53 m²
infection 02.1	02.1-002	30.53 m²
infection 02.1	02.1-003	30.53 m²
infection 02.1	02.1-004	30.53 m²
infection 02.1	02.1-005	30.53 m²
infection 02.2	02.2-001	22.17 m²
infection 02.2	02.2-002	22.17 m²
infection 02.2	02.2-003	22.17 m²
infection 02.2	02.2-004	22.17 m²
20		616.21 m²

Net Internal Area (NIA) in infection-02.1

Number	Name	Area	Perimeter
075	Bathroom	9.39 m²	12.94 m
085	Air-lock	10.15 m²	13.74 m
Grand total: 2		19.55 m²	

WIDTH* :3280 mm
HEIGHT* :4104 mm
LENGTH* :9309 mm
WEIGHT** :10.69 t

*Structural elements are not taken into account
**Indicative and for information only.

PROJECT NAME: Infection unit		PROJECT N°: 20EU-M005
SHEET NAME: infection-02.1 / floor plan - architecture		REVISION: X
DRAWING ID: A103 / X		SCALE: As indicated @A3
PROJ. MAN.	Ethan Chetrit	STAGE:
APPROVED BY	Kristaps Miķelsons	Estimation
ARCHITECT	Mārcis Rancāns	
DRAWN BY	Mārcis Rancāns	
REVIEW DATE	02/04/2020 17:02:13	
PROJECT ISSUED	Issue Date	

FORTA PRO

WE BUILD MODULAR

SIA Forta Pro, Rīga, Emīļa Melngaiļa iela 1A, LV-1010

The Copyright in this drawing is vested in "Forta Pro" and no license or assignment of any kind has been, or is granted to any third party whether by provision of copies or originals, or otherwise agreed in writing. Electronic Data / drawings are issued as "read only" and should not be interrogated for measurement.

1) All dimensions are in millimeters. 2) This drawing is a copyright and property of Forta PRO and is not to be produced, copied, handed over to third party or used for any other purpose other than for which it is intended. 3) All dimensions shall be verified on site prior to start of work. Any discrepancy shall be brought to the notice of Forta PRO. 4) The construction manager/ contractor must check all dimensions and details and be responsible for the same. 5) Dimensions are to be read and not to be scaled. 6) This drawing is to be read in conjunction with all relevant architectural, structural, MEP drawings, specialist drawings along with their specifications. 7) Any discrepancy shall be brought to the notice of the consultants within 7 working days of receipt of this drawing, but always prior to procurement/ execution of works. 8) Drawing approval is for the conformity with outline design intent only and does not relieve the project managers/ contractors/ sub contractors from full responsibility for the accuracy, integration and fitness for purpose of design. 9) Project managers to revert back within 7 working days of receipt, of this drawing on co-ordination and buildability issues. If otherwise, it would be deemed that they have understood and accepted the drawings/ design and own full responsibility for the works carried out accordingly.

X	2020.04.02	first draft	M. Rancāns
Revision	Date	Description	Issued by

C:\Users\User\Desktop\mr_forta_pro\01. projekti\modules\20EU-M005 infection unit\infection unit.rvt 02/04/2020 17:02:13

infection-02.2

FIRE: EI 60

Wall supplies:

- GPO3x - cleaners, CCTV
- RCD1x - residual current device for sockets
- Data1x - CCTV for Air Lock
- Nurse call:1x - Staff/staff call, cardiac arrest call + audio-visual signal elements

Surface cleaning:

- All surface materials be compatible with hard cleaning with disinfectants containing:
- Hydrogen Peroxide
 - Sodium Hypochlorite
 - Isopropanol
 - Formaldehyde
 - Glutaraldehyde
 - Peracetic acid

Room Material and outline specifications:

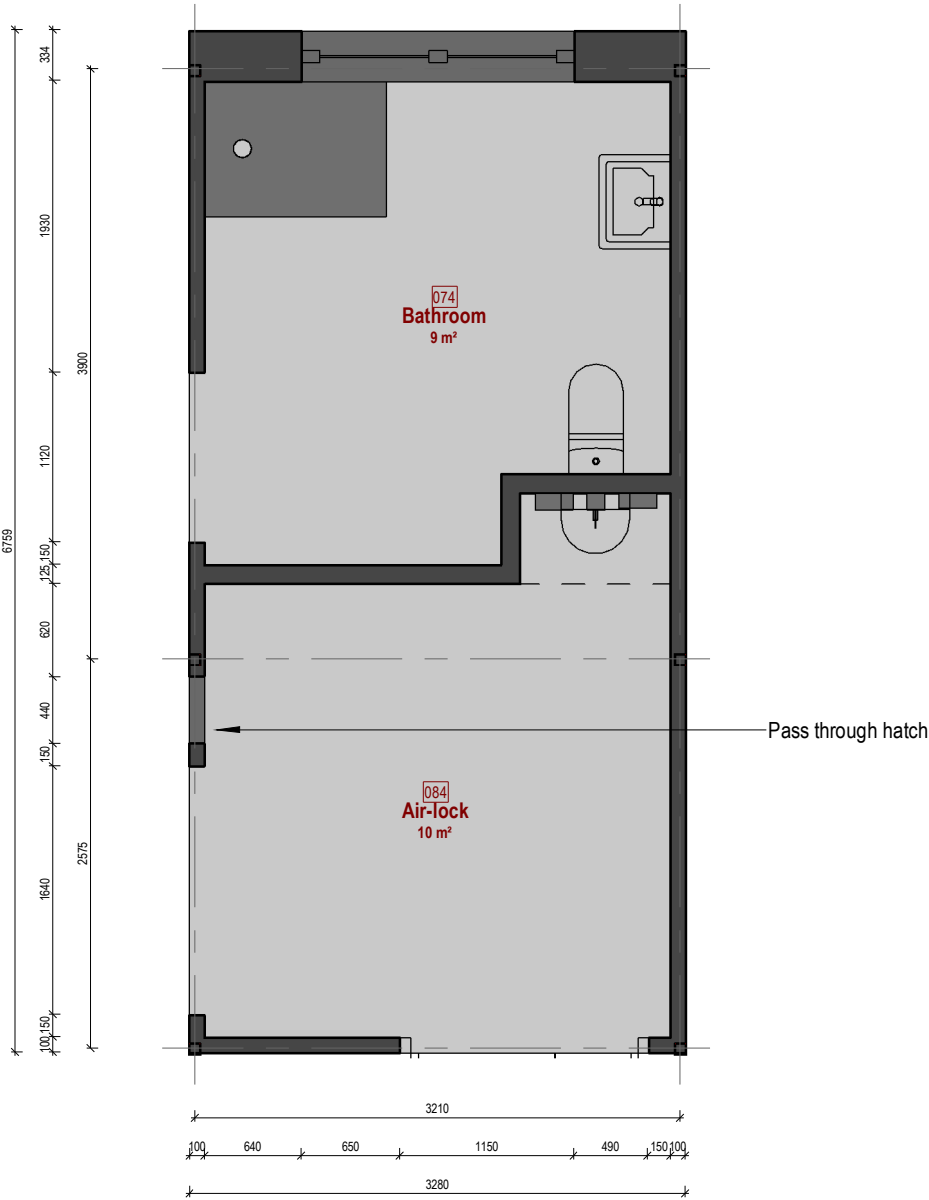
- FloorVinyl/ Linoleum flooring, slip resistant, 150mm coving, heavy duty
- WallsPaint, chemically resistant to hard cleaning
- Wall protection:Hand rails/ crash fails
- CeilingCeiling tiles, accoustically absorbent, sealed
- Door: singleeffective clear opening width min. 950 mm
- Door: doubleeffective clear opening width min. 1400 mm (950 + 450)
- Guards:door frameVinyl/PVC, up to 900mm AFFL
- Guards:door kick plateSteinless steel, up to 400 AFFL
- Window: exterior1800Wx1600H mm wall opening, transparent from inside, translucent from outside
- Handrail: corridor32-50mm Ø circular type, 50-75mm from wall, return to wall end caps, laminate
- Worktoplaminate

Other Fixtures, Equipment and associated Services:

-

Notes:

- BariatricServices not provisioned for bariatric patients
- ColumnsColumn dimensions w/out fire paint thickness
- Air supply:corridorMechanical ventilation and cooling, arrestance 85% (F7 according to EN 1822:2009), min. 6 AC/hr
- Air supply:air-lockMechanical ventilation and cooling, arrestance 99.95% (HEPA H13 according to EN 1822:2009), min. 15 AC/hr
- Air supply:bathroomMechanical ventilation and cooling, arrestance 99.95% (HEPA H13 according to EN 1822:2009), min. 6 AC/hr
- Emergency powerNo special emergency power outlets are provisioned
- TemperatureLocally controllable
- HumidityLocally controllable
- HeatingLow Pressure Hot Water radiators, thermostatically controllable
- Lighting500lux daytime general service illumination



not included

Gross Modular Area (GMA) infectious diseases

Name	Number	Area
infection 01.1	01.1-001	40.87 m²
infection 01.1	01.1-002	40.87 m²
infection 01.1	01.1-003	40.87 m²
infection 01.1	01.1-004	40.87 m²
infection 01.1	01.1-005	40.87 m²
infection 01.2	01.2-001	29.67 m²
infection 01.2	01.2-002	29.67 m²
infection 01.2	01.2-003	29.67 m²
infection 01.2	01.2-004	29.67 m²
infection 01.2	01.2-005	29.67 m²
infection 02.1	02.1-001	30.53 m²
infection 02.1	02.1-002	30.53 m²
infection 02.1	02.1-003	30.53 m²
infection 02.1	02.1-004	30.53 m²
infection 02.1	02.1-005	30.53 m²
infection 02.2	02.2-001	22.17 m²
infection 02.2	02.2-005	22.17 m²
infection 02.2	02.2-002	22.17 m²
infection 02.2	02.2-003	22.17 m²
infection 02.2	02.2-004	22.17 m²
20		616.21 m²

Net Internal Area (NIA) in infection-02.2

Number	Name	Area	Perimeter
074	Bathroom	9.39 m²	12.94 m
084	Air-lock	10.15 m²	13.74 m
Grand total: 2		19.55 m²	

WIDTH* :3280 mm
HEIGHT* :4104 mm
LENGTH* :6759 mm
WEIGHT** :7.76 t

*Structural elements are not taken into account
**Indicative and for information only.

PROJECT NAME: Infection unit		PROJECT N°: 20EU-M005
SHEET NAME: infection-02.2 / floor plan - architecture		REVISION: X
DRAWING ID: A104 / X		SCALE: As indicated @A3
PROJ. MAN.	Ethan Chetrit	STAGE:
APPROVED BY	Kristaps Miķelsons	Estimation
ARCHITECT	Mārcis Rancāns	
DRAWN BY	Mārcis Rancāns	
REVIEW DATE	02/04/2020 17:02:13	
PROJECT ISSUED	Issue Date	

FORTA PRO

WE BUILD MODULAR

SIA Forta Pro, Rīga, Emīļa Melngaiļa iela 1A, LV-1010

The Copyright in this drawing is vested in "Forta Pro" and no license or assignment of any kind has been, or is granted to any third party whether by provision of copies or originals, or otherwise agreed in writing. Electronic Data / drawings are issued as "read only" and should not be interrogated for measurement.

1) All dimensions are in millimeters. 2) This drawing is a copyright and property of Forta PRO and is not to be produced, copied, handed over to third party or used for any other purpose other than for which it is intended. 3) All dimensions shall be verified on site prior to start of work. Any discrepancy shall be brought to the notice of Forta PRO. 4) The construction manager/ contractor must check all dimensions and details and be responsible for the same. 5) Dimensions are to be read and not to be scaled. 6) This drawing is to be read in conjunction with all relevant architectural, structural, MEP drawings, specialist drawings along with their specifications. 7) Any discrepancy shall be brought to the notice of the consultants within 7 working days of receipt of this drawing, but always prior to procurement/ execution of works. 8) Drawing approval is for the conformity with outline design intent only and does not relieve the project managers/ contractors/ sub contractors from full responsibility for the accuracy, integration and fitness for purpose of design. 9) Project managers to revert back within 7 working days of receipt, of this drawing on co-ordination and buildability issues. If otherwise, it would be deemed that they have understood and accepted the drawings/ design and own full responsibility for the works carried out accordingly.

X	2020.04.02	first draft	M. Rancāns
Revision	Date	Description	Issued by

ОБОРУДОВАНИЕ И ФУРНИТУРА ИЗ РАСЧЕТА НА ПАЛАТУ:

4 шт.	Крюк одинарный, настенный	ВКЛЮЧЕНО
2 шт.	Стеновая панель медицинских систем, с лампой для чтения	НЕ ВКЛЮЧЕНО
1 шт.	Диспенсер настенный, для дез. средств	НЕ ВКЛЮЧЕНО
1 шт.	Диспенсер настенный, для бумажных полотенец	НЕ ВКЛЮЧЕНО
1 шт.	Диспенсер для одноразовых перчаток (размеры S,M,L) и одежды	НЕ ВКЛЮЧЕНО
2 шт.	Кровать медицинская, с подъемной спинной секцией, с изменяемой высотой (685-860мм), на колесах	НЕ ВКЛЮЧЕНО
2 шт.	Инфузионный насос, (190x110x60мм)	НЕ ВКЛЮЧЕНО
2 шт.	Инфузионный насос для энтерального питания (365x180x180мм)	НЕ ВКЛЮЧЕНО
2 шт.	Прикроватная тумбочка на колесиках, 4 секции с замком, вешалка для полотенца, (900x485x485мм)	НЕ ВКЛЮЧЕНО
2 шт.	Монитор пациента, многофункциональный (ECG, температура, BP, O ₂ /CO ₂ и пр.), с принадлежностями (280x360x220мм)	НЕ ВКЛЮЧЕНО
2 шт.	Инфузионный стенд с 2 крюками, мобильный, с фиксатором	НЕ ВКЛЮЧЕНО
2 шт.	Шприцевой насос (170x40x80мм)	НЕ ВКЛЮЧЕНО
2 шт.	Регулятор O ₂	НЕ ВКЛЮЧЕНО
2 шт.	Регулятор для мед. отсоса	НЕ ВКЛЮЧЕНО

ОБОРУДОВАНИЕ И ФУРНИТУРА ИЗ РАСЧЕТА НА ОТДЕЛЕНИЕ:

5 шт.	Дефибриллятор, переносной	НЕ ВКЛЮЧЕНО
1 шт.	Ультразвуковая система с эхо-кардиографией	НЕ ВКЛЮЧЕНО

FORTA PRO

W E B U I L D M O D U L A R

www.fortapro.com

Jurkalnes Street 15/25 - 221,
Riga, Latvia LV-1046

CONTACT US

[+371-67-32-32-34](tel:+37167323234)

info@fortapro.com

Facebook.com/FortaPRO



YouTube.com/FortaPRO