

# FORTA PRO

W E B U I L D M O D U L A R



MODULAR INFECTION CLINICAL UNIT

April 2020



- ❏ Forta PRO offers prefabricated volumetric modular solutions for:
  - ❏ Hospitals and clinics
  - ❏ Apartments
  - ❏ Student and Workers dormitories
  - ❏ Hotels and more...
- ❏ Authorized supplier to Danish hospitals
- ❏ Experienced in medical design
- ❏ Implemented projects in Denmark, Sweden, Iceland, UK, USA, Norway, Latvia
- ❏ 120 000 m2 per annum capacity
- ❏ Worldwide shipping





## MODULAR INFECTION CLINICAL UNIT

MANUFACTURER Forta Prefab SIA, company No 40103727283

## CERTIFICATES

Quality Management, Environmental Management, Occupational Health and Safety Management Systems of Forta Prefab Ltd. are ISO 14000, ISO 50001, ISO 45001 and ISO 9001 certified: <http://www.fortapro.com/certificates/>

## DISCLAIMER

- The illustrations in this document are all subject to changes and amendments.
- If the build-up and dimensions should be amended during the design detailing phase, any such amendments may impact the price.
- All dimensions are in millimetres
- This drawing is a copyright and property of Forta PRO and is not to be produced, copied, handed over to third party or used for any other purpose other than for which it is intended.
- All dimensions shall be verified on site prior to start of work. Any discrepancy shall be brought to the notice of Forta PRO.
- The construction manager/ contractor must check all dimensions and details and be responsible for the same.
- Dimensions are to be read and not to be scaled.
- This drawing is to be read in conjunction with all relevant architectural, structural, MEP drawings, specialist drawings along with their specifications.
- Any discrepancy shall be brought to the notice of the consultants within 7 working days of receipt of this drawing,
- but always prior to procurement/ execution of works.
- Drawing approval is for the conformity with outline design intent only and does not relieve the project managers/ contractors/ sub contractors from full responsibility for the accuracy, integration and fitness for purpose of design.
- Project managers to revert back within 7 working days of receipt, of this drawing on co-ordination and buildability issues. If otherwise, it would be deemed that they have understood and accepted the drawings/ design and own full responsibility for the works carried out accordingly.
- Optional items are not included in the price.



## FREE STANDING MODULAR FAST DEPLOYMENT 20-BED INFECTION CLINICAL BLOCK WITH TECHNICAL FACILITIES

This 20-bed infection clinical block is supposed to be placed on site-build or prefabricated foundations (not included in the modular program) and connected to hospital systems (ventilation, heating, medical gas, electrical, HIS etc. ).

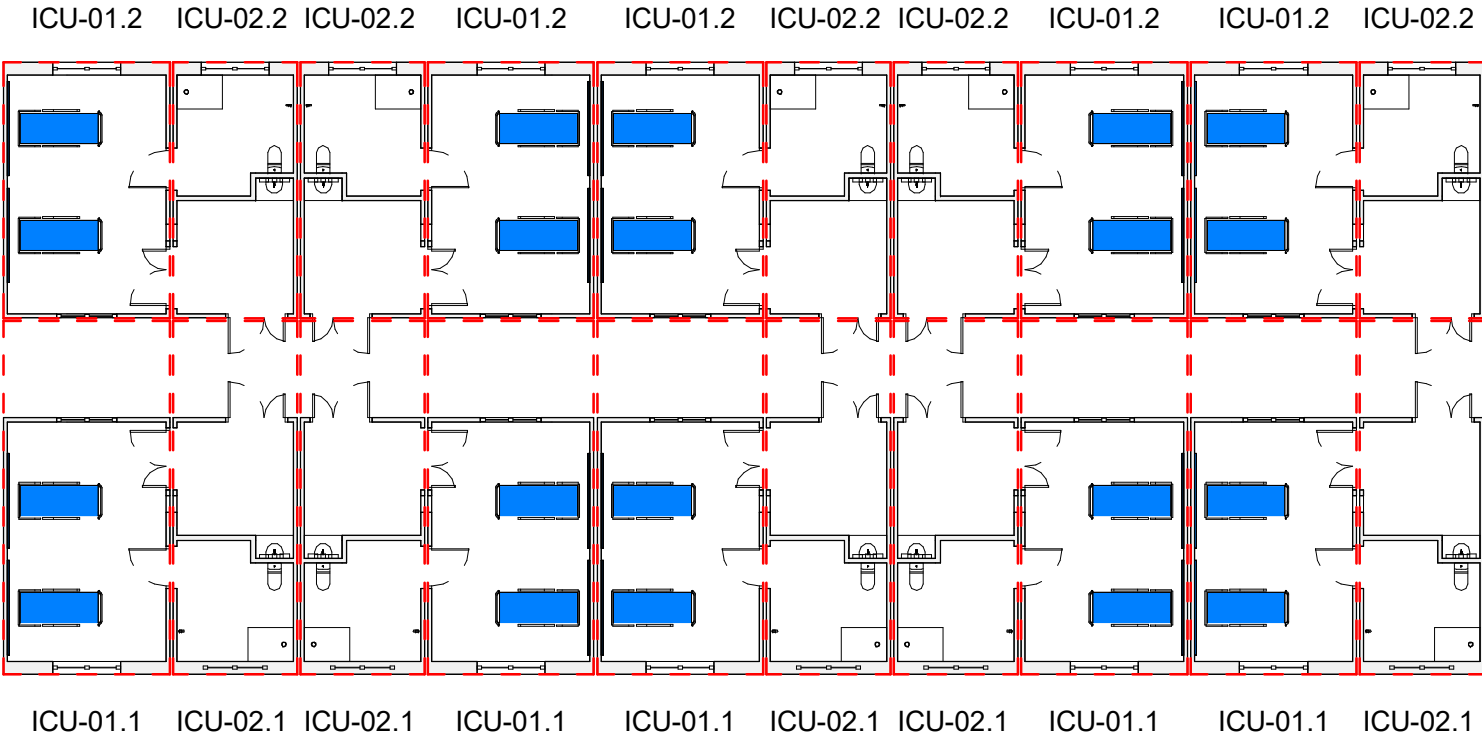
All mechanical, electrical, plumbing, heating, ventilation, air conditioning, medical gas system distribution components up to terminal units are factory installed in the module. Fixed medical equipment can be included and factory installed (not included in the given modular program). The module is ready for plug-and-play functionality.

- All proposed details are indicative only !
- All the details need to be addressed during the design phase !
- All sizes adjustable/alterable for modular design, construction and transportation !
- All potential risks and procedures to eliminate them should be evaluated during design phase !
- During the project, all standards and their application must be evaluated !
- It is possible to reduce module types by making all floor heights identical !
- Architectural, engineering and other specifications/details will be developed during the design phase
- Shafts and utility points should be considered during the design phase
- Structural solutions will be developed during the design phase
- Facade structure and finishing is excluded
- Areas other than marked as MODULAR are not included, if not specified otherwise
- All specifications and documents shall be made available to producer in plain English
- Explicit information on accessibility- or any other specific requirements should be provided to FORTA PRO in the initial design stage. Such as, but not limited to room sizes, special accessibility equipment installation, floor slopes, lighting, door opening sizes
- Gross modular area is defined excluding facade layers (assumed 110mm in thickness)

FIRE: EI 60

Gross Modular Area (GMA) infectious diseases		
Name	Number	Area
infection 01.1	01.1-001	40.87 m²
infection 01.1	01.1-002	40.87 m²
infection 01.1	01.1-003	40.87 m²
infection 01.1	01.1-004	40.87 m²
infection 01.1	01.1-005	40.87 m²
infection 01.2	01.2-001	29.67 m²
infection 01.2	01.2-002	29.67 m²
infection 01.2	01.2-003	29.67 m²
infection 01.2	01.2-004	29.67 m²
infection 01.2	01.2-005	29.67 m²
infection 02.1	02.1-001	30.53 m²
infection 02.1	02.1-002	30.53 m²
infection 02.1	02.1-003	30.53 m²
infection 02.1	02.1-004	30.53 m²
infection 02.1	02.1-005	30.53 m²
infection 02.2	02.2-001	22.17 m²
infection 02.2	02.2-002	22.17 m²
infection 02.2	02.2-003	22.17 m²
infection 02.2	02.2-004	22.17 m²
20		616.21 m²

not included



PROJECT NAME: <b>Infection unit</b>		PROJECT N°: <b>20EU-M005</b>
SHEET NAME: <b>Unit plan</b>		REVISION: <b>X</b>
DRAWING ID: <b>A100 / X</b>		SCALE: <b>1 : 200 @A3</b>
PROJ. MAN.	<b>Ethan Chetrit</b>	STAGE:
APPROVED BY	<b>Kristaps Miķelsons</b>	<b>Estimation</b>
ARCHITECT	<b>Mārcis Rancāns</b>	
DRAWN BY	<b>Mārcis Rancāns</b>	
REVIEW DATE	02/04/2020 17:02:11	
PROJECT ISSUED	Issue Date	

**FORTA PRO**  
WE BUILD MODULAR  
SIA Forta Pro, Rīga, Emīļa Melngaiļa iela 1A, LV-1010

The Copyright in this drawing is vested in "Forta Pro" and no license or assignment of any kind has been, or is granted to any third party whether by provision of copies or originals, or otherwise agreed in writing. Electronic Data / drawings are issued as "read only" and should not be interrogated for measurement.

1) All dimensions are in millimeters. 2) This drawing is a copyright and property of Forta PRO and is not to be produced, copied, handed over to third party or used for any other purpose other than for which it is intended. 3) All dimensions shall be verified on site prior to start of work. Any discrepancy shall be brought to the notice of Forta PRO. 4) The construction manager/ contractor must check all dimensions and details and be responsible for the same. 5) Dimensions are to be read and not to be scaled. 6) This drawing is to be read in conjunction with all relevant architectural, structural, MEP drawings, specialist drawings along with their specifications. 7) Any discrepancy shall be brought to the notice of the consultants within 7 working days of receipt of this drawing, but always prior to procurement/ execution of works. 8) Drawing approval is for the conformity with outline design intent only and does not relieve the project managers/ contractors/ sub contractors from full responsibility for the accuracy, integration and fitness for purpose of design. 9) Project managers to revert back within 7 working days of receipt, of this drawing on co-ordination and buildability issues. If otherwise, it would be deemed that they have understood and accepted the drawings/ design and own full responsibility for the works carried out accordingly.

X	2020.04.02	first draft	M. Rancāns
Revision	Date	Description	Issued by



Electrical and Medical gas supply panel per bed:

O <sub>2</sub>	1x - ventilation; 10L/min/bed
Air	1x - ventilation
Suction	1x - suction
GPO	8x - bed, multi parameter monitor, infusion pump, syringe pump, computer
GND	2x - equipotential earth connector plugs
RCD	1x - residual current device for sockets
Data	2x - computer

Wall supplies per bed:

GPO	5x - bed, cleaner, mobile equipment
RCD	1x - residual current device for sockets
Data	3x - CCTV, computer, TV (optional)
Nurse call:	1x - Staff/staff call, cardiac arrest call + audio-visual signal elements

Room Material and outline specifications:

Floor	Vinyl/ Linoleum flooring, slip resistant, 150mm coving, heavy duty
Walls	Paint, chemically resistant to hard cleaning
Guards:wall, corner	Vinyl/PVC, mm AFFL
Ceiling	Ceiling tiles, accoustically absorbent, sealed
Door: single	effective clear opening width min. 950 mm
Door: double	effective clear opening width min. 1400 mm (950 + 450)
Guards:door frame	Vinyl/PVC, up to 900mm AFFL
Guards:door kick plate	Steinless steel, up to 400 AFFL
Window: exterior	1800Wx1600H mm wall opening, transparent from inside, translucent from outside
Handrail: corridor	32-50mm Ø circular type, 50-75mm from wall, return to wall end caps,
Window:observation	1600Wx1600H, transparent, with blinds
Hatch	400Wx400H, pass through hatch
Worktop	laminate

Other Fixtures, Equipment and associated Services:

Surface cleaning:

All surface materials be compatible with hard cleaning with disinfectants containing:

- Hydrogen Peroxide
- Sodium Hypochlorite
- Isopropanol
- Formaldehyde
- Glutaraldehyde
- Peracetic acid

Notes:

Bariatric	Services not provisioned for bariatric patients
Columns	Column dimensions w/out fire paint thickness
Air supply:corridor	Mechanical ventilation and cooling, arrestance 85% (F7 according to EN 1822:2009), min. 6 AC/hr
Air supply:patient	Mechanical ventilation and cooling, arrestance 99.95% (F7 according to EN 1822:2009), min. 15 AC/hr
Emergency power	No special emergency power outlets are provisioned
Temperature	Locally controllable
Humidity	Locally controllable
Heating	Low Pressure Hot Water radiators, thermostatically controllable
Lighting	20lux night general service illumination, 500lux daytime general service illumination, 1000lux local task illuminance at bed level (by examination lamp)

infection-01.1

FIRE: EI 60

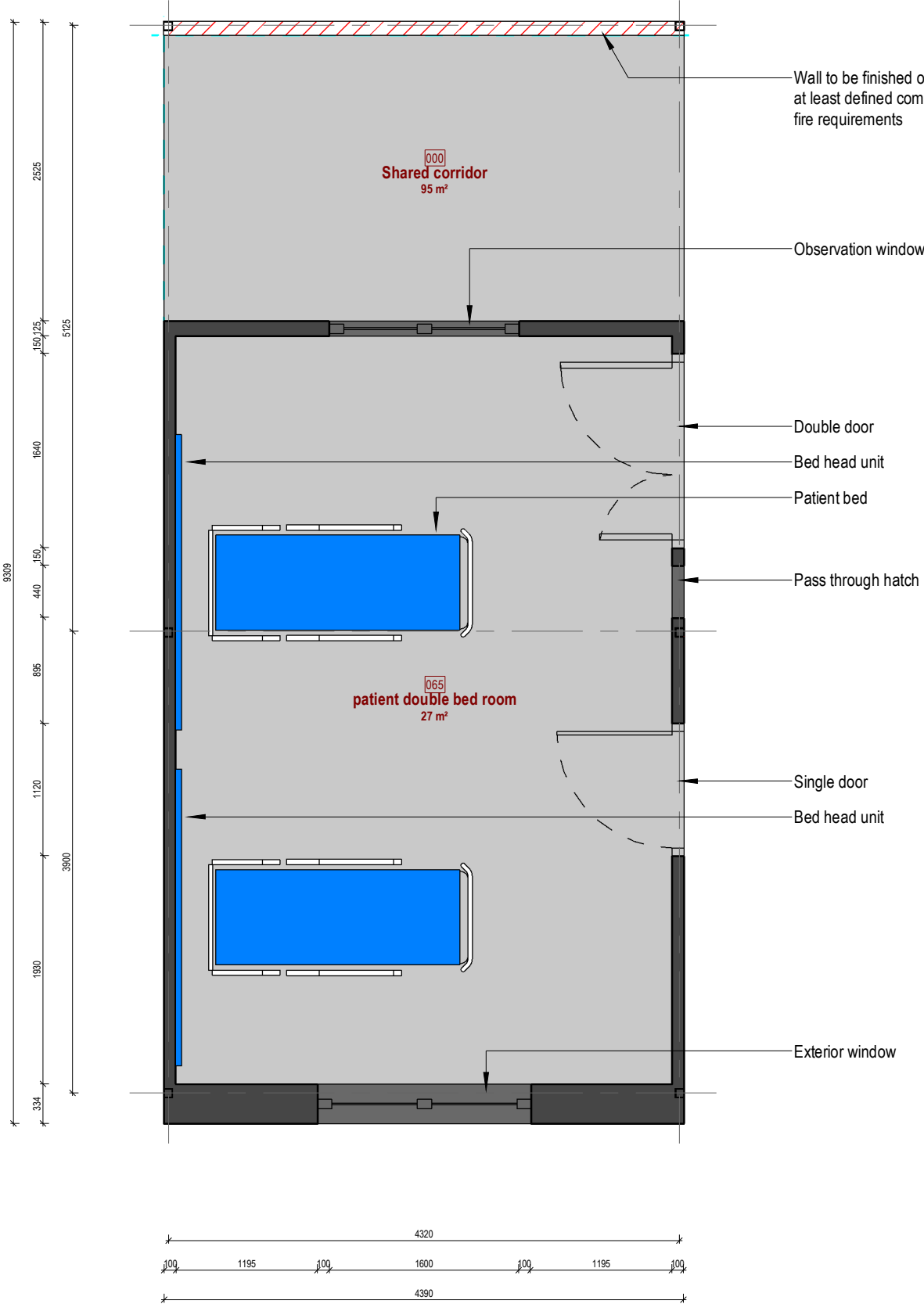
not included

Gross Modular Area (GMA) infectious diseases

Name	Number	Area
infection 01.1	01.1-001	40.87 m²
infection 01.1	01.1-002	40.87 m²
infection 01.1	01.1-003	40.87 m²
infection 01.1	01.1-004	40.87 m²
infection 01.1	01.1-005	40.87 m²
infection 01.2	01.2-001	29.67 m²
infection 01.2	01.2-002	29.67 m²
infection 01.2	01.2-003	29.67 m²
infection 01.2	01.2-004	29.67 m²
infection 01.2	01.2-005	29.67 m²
infection 02.1	02.1-001	30.53 m²
infection 02.1	02.1-002	30.53 m²
infection 02.1	02.1-003	30.53 m²
infection 02.1	02.1-004	30.53 m²
infection 02.1	02.1-005	30.53 m²
infection 02.2	02.2-001	22.17 m²
infection 02.2	02.2-002	22.17 m²
infection 02.2	02.2-003	22.17 m²
infection 02.2	02.2-004	22.17 m²
20		616.21 m²

Net Internal Area (NIA) in infection-01.1

Number	Name	Department	Area	Perimeter
065	patient double bed room	infection-01.1	26.50 m²	21.03 m
			26.50 m²	



WIDTH\* :4400 mm  
HEIGHT\* :4104 mm  
LENGTH\* :9324 mm  
WEIGHT\*\* :14.36 t

\*Structural elements are not taken into account  
\*\*Indicative and for information only.

PROJECT NAME:	<b>Infection unit</b>	PROJECT N°:	<b>20EU-M005</b>
SHEET NAME:	<b>infection-01.1 / floor plan - architecture</b>	REVISION:	<b>X</b>
DRAWING ID:	<b>A101 / X</b>	SCALE:	<b>As indicated @A3</b>
PROJ. MAN.	<b>Ethan Chetrit</b>	STAGE:	<b>Estimation</b>
APPROVED BY	<b>Kristaps Miķelsons</b>		
ARCHITECT	<b>Mārcis Rancāns</b>		
DRAWN BY	<b>Mārcis Rancāns</b>		
REVIEW DATE	<b>02/04/2020 17:02:12</b>		
PROJECT ISSUED	<b>Issue Date</b>		

**FORTA PRO**

WE BUILD MODULAR

SIA Forta Pro, Rīga, Emīļa Melngaiļa iela 1A, LV-1010

The Copyright in this drawing is vested in "Forta Pro" and no license or assignment of any kind has been, or is granted to any third party whether by provision of copies or originals, or otherwise agreed in writing. Electronic Data / drawings are issued as "read only" and should not be interrogated for measurement.

1) All dimensions are in millimeters. 2) This drawing is a copyright and property of Forta PRO and is not to be produced, copied, handed over to third party or used for any other purpose other than for which it is intended. 3) All dimensions shall be verified on site prior to start of work. Any discrepancy shall be brought to the notice of Forta PRO. 4) The construction manager/ contractor must check all dimensions and details and be responsible for the same. 5) Dimensions are to be read and not to be scaled. 6) This drawing is to be read in conjunction with all relevant architectural, structural, MEP drawings, specialist drawings along with their specifications. 7) Any discrepancy shall be brought to the notice of the consultants within 7 working days of receipt of this drawing, but always prior to procurement/ execution of works. 8) Drawing approval is for the conformity with outline design intent only and does not relieve the project managers/ contractors/ sub contractors from full responsibility for the accuracy, integration and fitness for purpose of design. 9) Project managers to revert back within 7 working days of receipt, of this drawing on co-ordination and buildability issues. If otherwise, it would be deemed that they have understood and accepted the drawings/ design and own full responsibility for the works carried out accordingly.

X	2020.04.02	first draft	M. Rancāns
Revision	Date	Description	Issued by



C:\Users\User\Desktop\mr\_forta\_pro\01. projekti\modules\20EU-M005 infection unit\infection unit.rvt

02/04/2020 17:02:12

Electrical and Medical gas supply panel per bed:

O <sub>2</sub>	1x - ventilation; 10L/min/bed
Air	1x - ventilation
Suction	1x - suction
GPO	8x - bed, multi parameter monitor, infusion pump, syringe pump, computer
GND	2x - equipotential earth connector plugs
RCD	1x - residual current device for sockets
Data	2x - computer

Wall supplies per bed:

GPO	5x - bed, cleaner, mobile equipment
RCD	1x - residual current device for sockets
Data	3x - CCTV, computer, TV (optional)
Nurse call:	1x - Staff/staff call, cardiac arrest call + audio-visual signal elements

Room Material and outline specifications:

Floor	Vinyl/ Linoleum flooring, slip resistant, 150mm coving, heavy duty
Walls	Paint, chemically resistant to hard cleaning
Guards:wall, corner	Vinyl/PVC, mm AFFL
Ceiling	Ceiling tiles, accoustically absorbent, sealed
Door: single	effective clear opening width min. 950 mm
Door: double	effective clear opening width min. 1400 mm (950 + 450)
Guards:door frame	Vinyl/PVC, up to 900mm AFFL
Guards:door kick plate	Steinless steel, up to 400 AFFL
Window: exterior	1800Wx1600H mm wall opening, transparent from inside, translucent from outside
Handrail: corridor	32-50mm Ø circular type, 50-75mm from wall, return to wall end caps,
Window:observation	1600Wx1600H, transparent, with blinds
Hatch	400Wx400H, pass through hatch
Worktop	laminate

Other Fixtures, Equipment and associated Services:

-

Surface cleaning:

All surface materials be compatible with hard cleaning with disinfectants containing:

- Hydrogen Peroxide
- Sodium Hypochlorite
- Isopropanol
- Formaldehyde
- Glutaraldehyde
- Peracetic acid

Notes:

Bariatric	Services not provisioned for bariatric patients
Columns	Column dimensions w/out fire paint thickness
Air supply:corridor	Mechanical ventilation and cooling, arrestance 85% (F7 according to EN 1822:2009), min. 6 AC/hr
Air supply:patient	Mechanical ventilation and cooling, arrestance 99.95% (F7 according to EN 1822:2009), min. 15 AC/hr
Emergency power	No special emergency power outlets are provisioned
Temperature	Locally controllable
Humidity	Locally controllable
Heating	Low Pressure Hot Water radiators, thermostatically controllable
Lighting	20lux night general service illumination, 500lux daytime general service illumination, 1000lux local task illuminance at bed level (by examination lamp)

infection-01.2

FIRE: EI 60

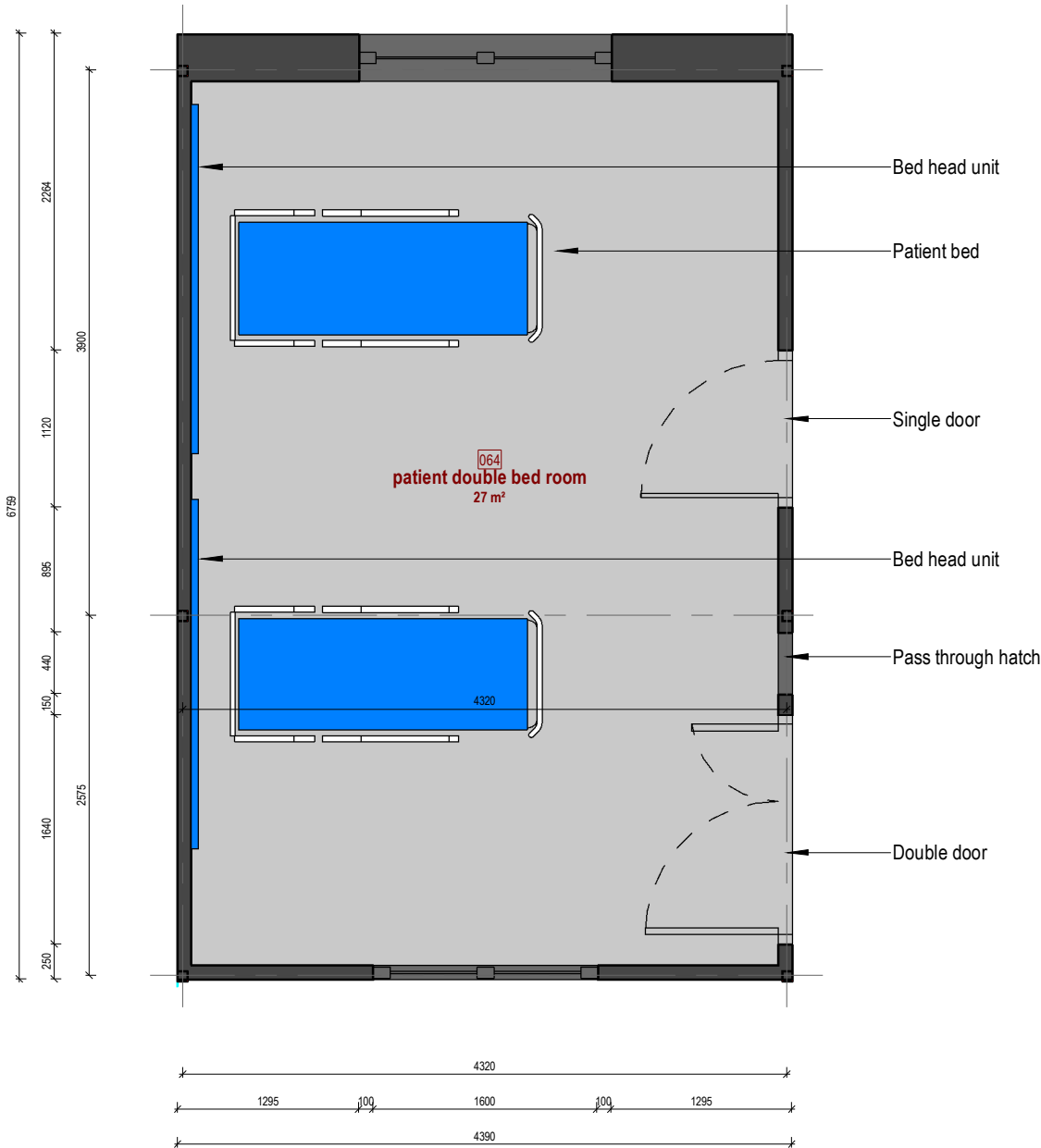
not included

Gross Modular Area (GMA) infectious diseases

Name	Number	Area
infection 01.1	01.1-001	40.87 m²
infection 01.1	01.1-002	40.87 m²
infection 01.1	01.1-003	40.87 m²
infection 01.1	01.1-004	40.87 m²
infection 01.1	01.1-005	40.87 m²
infection 01.2	01.2-001	29.67 m²
infection 01.2	01.2-002	29.67 m²
infection 01.2	01.2-003	29.67 m²
infection 01.2	01.2-004	29.67 m²
infection 01.2	01.2-005	29.67 m²
infection 02.1	02.1-001	30.53 m²
infection 02.1	02.1-002	30.53 m²
infection 02.1	02.1-003	30.53 m²
infection 02.1	02.1-004	30.53 m²
infection 02.1	02.1-005	30.53 m²
infection 02.2	02.2-001	22.17 m²
infection 02.2	02.2-005	22.17 m²
infection 02.2	02.2-002	22.17 m²
infection 02.2	02.2-003	22.17 m²
infection 02.2	02.2-004	22.17 m²
20		616.21 m²

Net Internal Area (NIA) in infection-01.2

Number	Name	Area	Perimeter
064	patient double bed room	26.50 m²	21.03 m
		26.50 m²	



WIDTH\* :4400 mm  
HEIGHT\* :4390 mm  
LENGTH\* :6759 mm  
WEIGHT\*\* :10.41 t

\*Structural elements are not taken into account  
\*\*Indicative and for information only.

PROJECT NAME:	PROJECT N°:
<b>Infection unit</b>	<b>20EU-M005</b>
SHEET NAME:	REVISION:
<b>infection-01.2 / floor plan - architecture</b>	<b>X</b>
DRAWING ID:	SCALE:
<b>A102 / X</b>	<b>As indicated @A3</b>
PROJ. MAN.	STAGE:
<b>Ethan Chetrit</b>	<b>Estimation</b>
APPROVED BY	
<b>Kristaps Miķelsons</b>	
ARCHITECT	
<b>Mārcis Rancāns</b>	
DRAWN BY	
<b>Mārcis Rancāns</b>	
REVIEW DATE	
<b>02/04/2020 17:02:12</b>	
PROJECT ISSUED	Issue Date

FORTA PRO

WE BUILD MODULAR

SIA Forta Pro, Rīga, Emīļa Melngaiļa iela 1A, LV-1010

The Copyright in this drawing is vested in "Forta Pro" and no license or assignment of any kind has been, or is granted to any third party whether by provision of copies or originals, or otherwise agreed in writing. Electronic Data / drawings are issued as "read only" and should not be interrogated for measurement.

1) All dimensions are in millimeters. 2) This drawing is a copyright and property of Forta PRO and is not to be produced, copied, handed over to third party or used for any other purpose other than for which it is intended. 3) All dimensions shall be verified on site prior to start of work. Any discrepancy shall be brought to the notice of Forta PRO. 4) The construction manager/ contractor must check all dimensions and details and be responsible for the same. 5) Dimensions are to be read and not to be scaled. 6) This drawing is to be read in conjunction with all relevant architectural, structural, MEP drawings, specialist drawings along with their specifications. 7) Any discrepancy shall be brought to the notice of the consultants within 7 working days of receipt of this drawing, but always prior to procurement/ execution of works. 8) Drawing approval is for the conformity with outline design intent only and does not relieve the project managers/ contractors/ sub contractors from full responsibility for the accuracy, integration and fitness for purpose of design. 9) Project managers to revert back within 7 working days of receipt, of this drawing on co-ordination and buildability issues. If otherwise, it would be deemed that they have understood and accepted the drawings/ design and own full responsibility for the works carried out accordingly.

X	2020.04.02	first draft	M. Rancāns
Revision	Date	Description	Issued by

C:\Users\User\Desktop\mr\_forta\_pro\01. projekti\modules\20EU-M005 infection unit\infection unit.rvt 02/04/2020 17:02:13

infection-02.1

FIRE: EI 60

Wall supplies:

- GPO3x - cleaners, CCTV
- RCD1x - residual current device for sockets
- Data1x - CCTV for Air Lock
- Nurse call:1x - Staff/staff call, cardiac arrest call + audio-visual signal elements

Surface cleaning:

- All surface materials be compatible with hard cleaning with disinfectants containing:
- Hydrogen Peroxide
  - Sodium Hypochlorite
  - Isopropanol
  - Formaldehyde
  - Glutaraldehyde
  - Peracetic acid

Room Material and outline specifications:

- FloorVinyl/ Linoleum flooring, slip resistant, 150mm coving, heavy duty
- WallsPaint, chemically resistant to hard cleaning
- Wall protection:Hand rails/ crash fails
- CeilingCeiling tiles, accoustically absorbent, sealed
- Door: singleeffective clear opening width min. 950 mm
- Door: doubleeffective clear opening width min. 1400 mm (950 + 450)
- Guards:door frameVinyl/PVC, up to 900mm AFFL
- Guards:door kick plateSteinless steel, up to 400 AFFL
- Window: exterior1800Wx1600H mm wall opening, transparent from inside, translucent from outside
- Handrail: corridor32-50mm Ø circular type, 50-75mm from wall, return to wall end caps, laminate
- Worktoplaminate

Other Fixtures, Equipment and associated Services:

-

Notes:

- BariatricServices not provisioned for bariatric patients
- ColumnsColumn dimensions w/out fire paint thickness
- Air supply:corridorMechanical ventilation and cooling, arrestance 85% (F7 according to EN 1822:2009), min. 6 AC/hr
- Air supply:air-lockMechanical ventilation and cooling, arrestance 99.95% (HEPA H13 according to EN 1822:2009), min. 15 AC/hr
- Air supply:bathroomMechanical ventilation and cooling, arrestance 99.95% (HEPA H13 according to EN 1822:2009), min. 6 AC/hr
- Emergency powerNo special emergency power outlets are provisioned
- TemperatureLocally controllable
- HumidityLocally controllable
- HeatingLow Pressure Hot Water radiators, thermostatically controllable
- Lighting500lux daytime general service illumination

not included

Gross Modular Area (GMA) infectious diseases		
Name	Number	Area
infection 01.1	01.1-001	40.87 m²
infection 01.1	01.1-002	40.87 m²
infection 01.1	01.1-003	40.87 m²
infection 01.1	01.1-004	40.87 m²
infection 01.1	01.1-005	40.87 m²
infection 01.2	01.2-001	29.67 m²
infection 01.2	01.2-002	29.67 m²
infection 01.2	01.2-003	29.67 m²
infection 01.2	01.2-004	29.67 m²
infection 01.2	01.2-005	29.67 m²
infection 02.1	02.1-001	30.53 m²
infection 02.1	02.1-002	30.53 m²
infection 02.1	02.1-003	30.53 m²
infection 02.1	02.1-004	30.53 m²
infection 02.1	02.1-005	30.53 m²
infection 02.2	02.2-001	22.17 m²
infection 02.2	02.2-005	22.17 m²
infection 02.2	02.2-002	22.17 m²
infection 02.2	02.2-003	22.17 m²
infection 02.2	02.2-004	22.17 m²
20		616.21 m²

Net Internal Area (NIA) in infection-02.1

Number	Name	Area	Perimeter
075	Bathroom	9.39 m²	12.94 m
085	Air-lock	10.15 m²	13.74 m
Grand total: 2		19.55 m²	

WIDTH\* :3280 mm  
HEIGHT\* :4104 mm  
LENGTH\* :9309 mm  
WEIGHT\*\* :10.69 t

\*Structural elements are not taken into account  
\*\*Indicative and for information only.

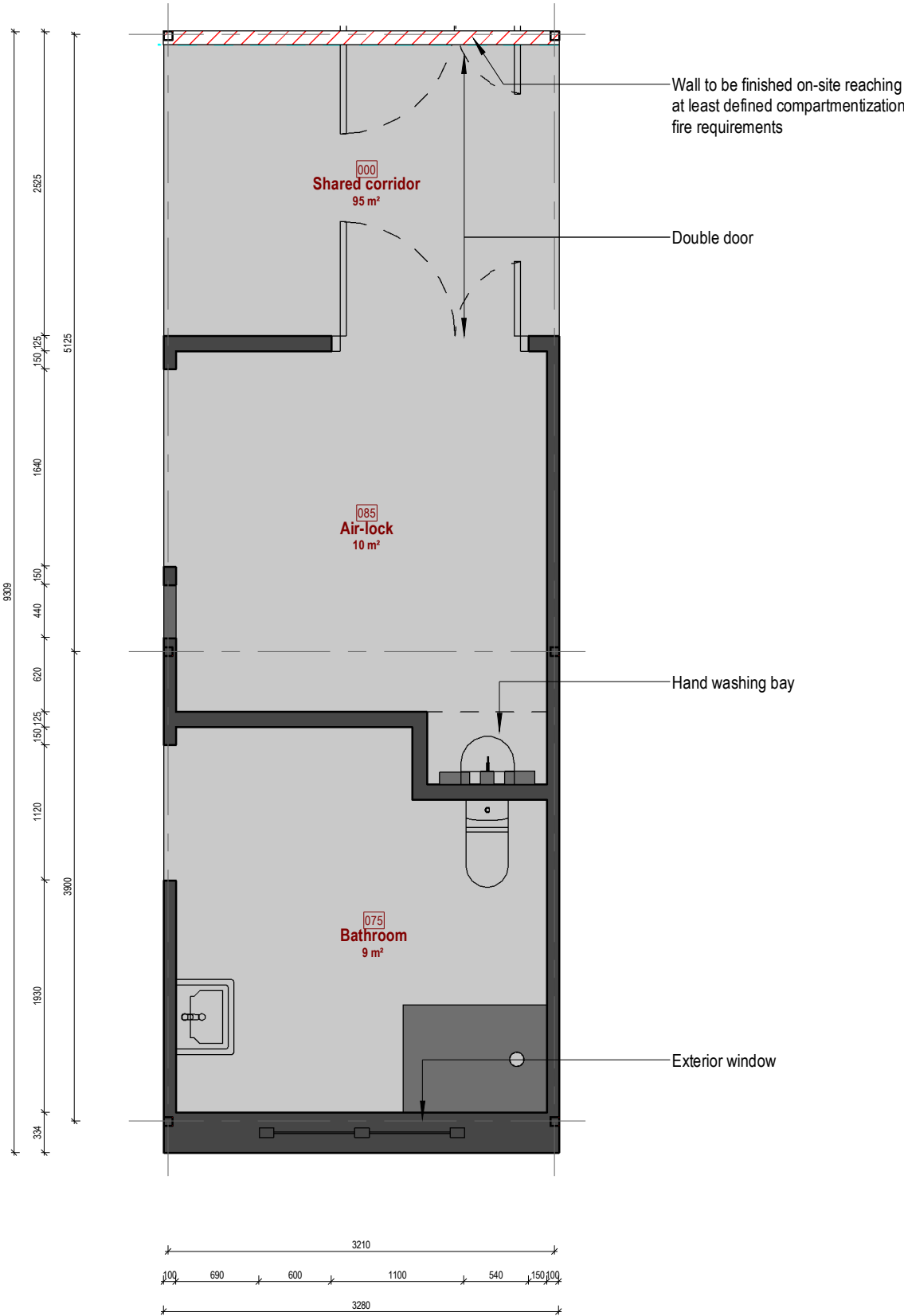
PROJECT NAME: <b>Infection unit</b>		PROJECT N°: <b>20EU-M005</b>
SHEET NAME: <b>infection-02.1 / floor plan - architecture</b>		REVISION: <b>X</b>
DRAWING ID: <b>A103 / X</b>		SCALE: <b>As indicated @A3</b>
PROJ. MAN.	<b>Ethan Chetrit</b>	STAGE:
APPROVED BY	<b>Kristaps Miķelsons</b>	<b>Estimation</b>
ARCHITECT	<b>Mārcis Rancāns</b>	
DRAWN BY	<b>Mārcis Rancāns</b>	
REVIEW DATE	02/04/2020 17:02:13	
PROJECT ISSUED	Issue Date	

FORTA PRO

WE BUILD MODULAR

SIA Forta Pro, Rīga, Emīļa Melngaiļa iela 1A, LV-1010

The Copyright in this drawing is vested in "Forta Pro" and no license or assignment of any kind has been, or is granted to any third party whether by provision of copies or originals, or otherwise agreed in writing. Electronic Data / drawings are issued as "read only" and should not be interrogated for measurement.



1) All dimensions are in millimeters. 2) This drawing is a copyright and property of Forta PRO and is not to be produced, copied, handed over to third party or used for any other purpose other than for which it is intended. 3) All dimensions shall be verified on site prior to start of work. Any discrepancy shall be brought to the notice of Forta PRO. 4) The construction manager/ contractor must check all dimensions and details and be responsible for the same. 5) Dimensions are to be read and not to be scaled. 6) This drawing is to be read in conjunction with all relevant architectural, structural, MEP drawings, specialist drawings along with their specifications. 7) Any discrepancy shall be brought to the notice of the consultants within 7 working days of receipt of this drawing, but always prior to procurement/ execution of works. 8) Drawing approval is for the conformity with outline design intent only and does not relieve the project managers/ contractors/ sub contractors from full responsibility for the accuracy, integration and fitness for purpose of design. 9) Project managers to revert back within 7 working days of receipt, of this drawing on co-ordination and buildability issues. If otherwise, it would be deemed that they have understood and accepted the drawings/ design and own full responsibility for the works carried out accordingly.

Revision	Date	Description	Issued by
X	2020.04.02	first draft	M. Rancāns

C:\Users\User\Desktop\mr\_forta\_pro\01. projekti\modules\20EU-M005 infection unit\infection unit.rvt 02/04/2020 17:02:13

infection-02.2

FIRE: EI 60

Wall supplies:

- GPO3x - cleaners, CCTV
- RCD1x - residual current device for sockets
- Data1x - CCTV for Air Lock
- Nurse call:1x - Staff/staff call, cardiac arrest call + audio-visual signal elements

Surface cleaning:

All surface materials be compatible with hard cleaning with disinfectants containing:

- Hydrogen Peroxide
- Sodium Hypochlorite
- Isopropanol
- Formaldehyde
- Glutaraldehyde
- Peracetic acid

Room Material and outline specifications:

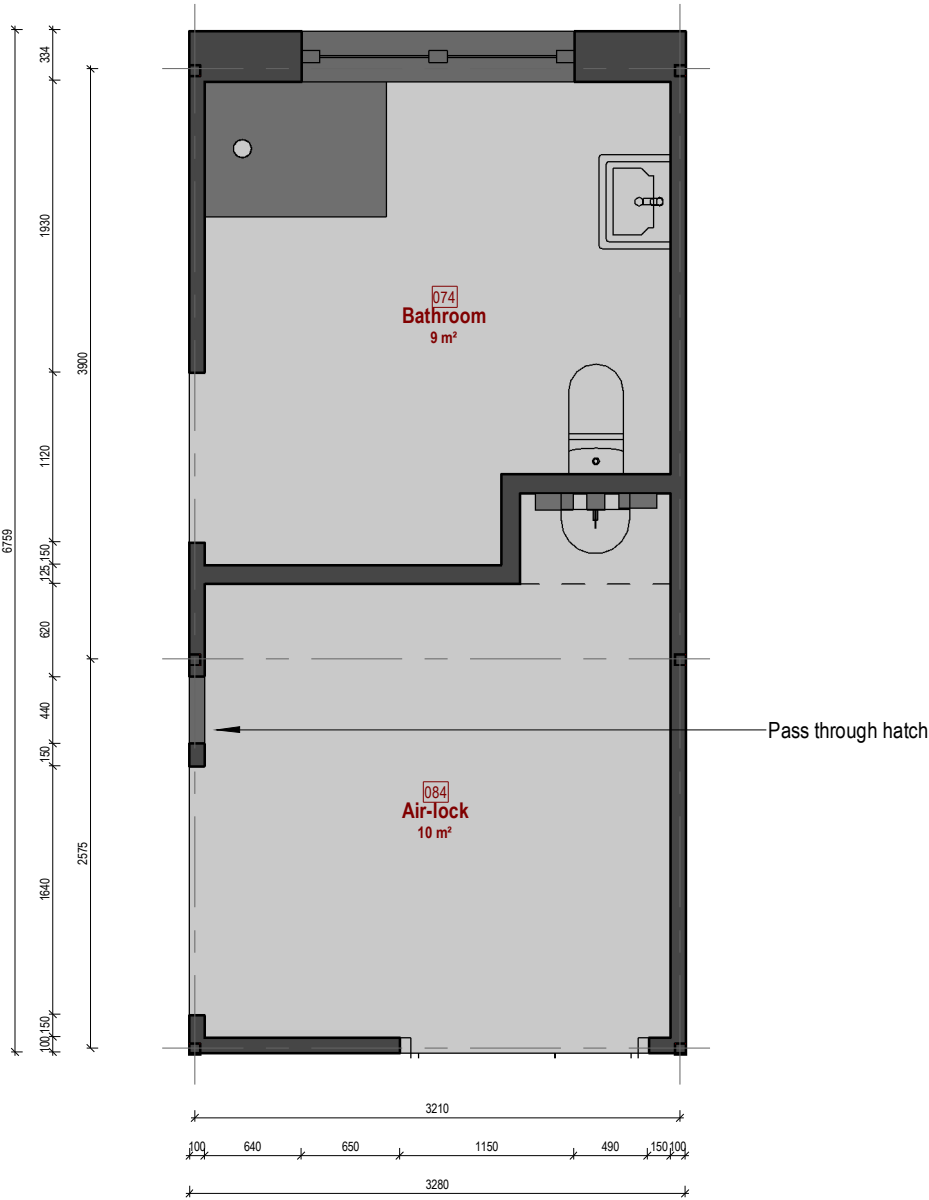
- FloorVinyl/ Linoleum flooring, slip resistant, 150mm coving, heavy duty
- WallsPaint, chemically resistant to hard cleaning
- Wall protection:Hand rails/ crash fails
- CeilingCeiling tiles, accoustically absorbent, sealed
- Door: singleeffective clear opening width min. 950 mm
- Door: doubleeffective clear opening width min. 1400 mm (950 + 450)
- Guards:door frameVinyl/PVC, up to 900mm AFFL
- Guards:door kick plateSteinless steel, up to 400 AFFL
- Window: exterior1800Wx1600H mm wall opening, transparent from inside, translucent from outside
- Handrail: corridor32-50mm Ø circular type, 50-75mm from wall, return to wall end caps, laminate
- Worktoplaminate

Other Fixtures, Equipment and associated Services:

-

Notes:

- BariatricServices not provisioned for bariatric patients
- ColumnsColumn dimensions w/out fire paint thickness
- Air supply:corridorMechanical ventilation and cooling, arrestance 85% (F7 according to EN 1822:2009), min. 6 AC/hr
- Air supply:air-lockMechanical ventilation and cooling, arrestance 99.95% (HEPA H13 according to EN 1822:2009), min. 15 AC/hr
- Air supply:bathroomMechanical ventilation and cooling, arrestance 99.95% (HEPA H13 according to EN 1822:2009), min. 6 AC/hr
- Emergency powerNo special emergency power outlets are provisioned
- TemperatureLocally controllable
- HumidityLocally controllable
- HeatingLow Pressure Hot Water radiators, thermostatically controllable
- Lighting500lux daytime general service illumination



Gross Modular Area (GMA) infectious diseases

Name	Number	Area
infection 01.1	01.1-001	40.87 m²
infection 01.1	01.1-002	40.87 m²
infection 01.1	01.1-003	40.87 m²
infection 01.1	01.1-004	40.87 m²
infection 01.1	01.1-005	40.87 m²
infection 01.2	01.2-001	29.67 m²
infection 01.2	01.2-002	29.67 m²
infection 01.2	01.2-003	29.67 m²
infection 01.2	01.2-004	29.67 m²
infection 01.2	01.2-005	29.67 m²
infection 02.1	02.1-001	30.53 m²
infection 02.1	02.1-002	30.53 m²
infection 02.1	02.1-003	30.53 m²
infection 02.1	02.1-004	30.53 m²
infection 02.1	02.1-005	30.53 m²
infection 02.2	02.2-001	22.17 m²
infection 02.2	02.2-005	22.17 m²
infection 02.2	02.2-002	22.17 m²
infection 02.2	02.2-003	22.17 m²
infection 02.2	02.2-004	22.17 m²
20		616.21 m²

Net Internal Area (NIA) in infection-02.2

Number	Name	Area	Perimeter
074	Bathroom	9.39 m²	12.94 m
084	Air-lock	10.15 m²	13.74 m
Grand total: 2		19.55 m²	

WIDTH\* :3280 mm  
HEIGHT\* :4104 mm  
LENGTH\* :6759 mm  
WEIGHT\*\* :7.76 t

\*Structural elements are not taken into account  
\*\*Indicative and for information only.

PROJECT NAME: <b>Infection unit</b>		PROJECT N°: <b>20EU-M005</b>
SHEET NAME: <b>infection-02.2 / floor plan - architecture</b>		REVISION: <b>X</b>
DRAWING ID: <b>A104 / X</b>		SCALE: <b>As indicated @A3</b>
PROJ. MAN.	<b>Ethan Chetrit</b>	STAGE:
APPROVED BY	<b>Kristaps Miķelsons</b>	<b>Estimation</b>
ARCHITECT	<b>Mārcis Rancāns</b>	
DRAWN BY	<b>Mārcis Rancāns</b>	
REVIEW DATE	02/04/2020 17:02:13	
PROJECT ISSUED	Issue Date	

FORTA PRO

WE BUILD MODULAR

SIA Forta Pro, Rīga, Emīļa Melngaiļa iela 1A, LV-1010

The Copyright in this drawing is vested in "Forta Pro" and no license or assignment of any kind has been, or is granted to any third party whether by provision of copies or originals, or otherwise agreed in writing. Electronic Data / drawings are issued as "read only" and should not be interrogated for measurement.

1) All dimensions are in millimeters. 2) This drawing is a copyright and property of Forta PRO and is not to be produced, copied, handed over to third party or used for any other purpose other than for which it is intended. 3) All dimensions shall be verified on site prior to start of work. Any discrepancy shall be brought to the notice of Forta PRO. 4) The construction manager/ contractor must check all dimensions and details and be responsible for the same. 5) Dimensions are to be read and not to be scaled. 6) This drawing is to be read in conjunction with all relevant architectural, structural, MEP drawings, specialist drawings along with their specifications. 7) Any discrepancy shall be brought to the notice of the consultants within 7 working days of receipt of this drawing, but always prior to procurement/ execution of works. 8) Drawing approval is for the conformity with outline design intent only and does not relieve the project managers/ contractors/ sub contractors from full responsibility for the accuracy, integration and fitness for purpose of design. 9) Project managers to revert back within 7 working days of receipt, of this drawing on co-ordination and buildability issues. If otherwise, it would be deemed that they have understood and accepted the drawings/ design and own full responsibility for the works carried out accordingly.

X	2020.04.02	first draft	M. Rancāns
Revision	Date	Description	Issued by

## SERVICES, FURNITURE, FITTINGS AND EQUIPMENT PER ROOM:

4 pcs.	Hook single, wall mounted	INCLUDED
2 pcs.	Wall services panel medical services, length as drawn, up-down reading light	OPTIONAL
1 pcs.	Dispenser, hand sanitizer lever action, wall mounted not-included	OPTIONAL
1 pcs.	Dispenser, paper towel wall mounted	OPTIONAL
1 pcs.	Dispenser, disposable gloves set of three (S,M,L) + disposable apron	OPTIONAL
2 pcs.	Bed standard patient bed with rising backrest, height adjustable (685-860), on castors	OPTIONAL
2 pcs.	Infusion pump volumetric pump, approx. 190H 110W 60D	OPTIONAL
2 pcs.	Infusion pump enteral feeding, approx. 365H 180W 180D	OPTIONAL
2 pcs.	Locker bedside, four compartments, lockable section/drawer, towel rail at rear side, on castors, approx. 900H 485W 485D	OPTIONAL
2 pcs.	Monitor vital signs, multi-parameter (ECG, Temperature, BP, O <sub>2</sub> /CO <sub>2</sub> etc.), with accessories, 280H 360W 220D	OPTIONAL
2 pcs.	Infusion stand twin hook, mobile, with breaks	OPTIONAL
2 pcs.	Syringe pump battery operated, approx. 170H 40W 80D	OPTIONAL
2 pcs.	Regulator O <sub>2</sub>	OPTIONAL
2 pcs.	Regulator suction	OPTIONAL

## SERVICES, FURNITURE, FITTINGS AND EQUIPMENT PER UNIT:

5 pcs.	Defibrillator mobile	OPTIONAL
1 pcs.	Ultrasound/ cardiac-echo	OPTIONAL



# FORTA PRO

W E B U I L D M O D U L A R

[www.fortapro.com](http://www.fortapro.com)

Jurkalnes Street 15/25 - 221,  
Riga, Latvia LV-1046

CONTACT US

[+371-67-32-32-34](tel:+37167323234)

[info@fortapro.com](mailto:info@fortapro.com)

[Facebook.com/FortaPRO](https://Facebook.com/FortaPRO)



[YouTube.com/FortaPRO](https://YouTube.com/FortaPRO)